

Koninklijke **STADS**
SCHOUW
BURG Brugge

2024



2025

CCBRUGGE.BE

Technical rider
Daverlo Bruges

This is the production and technical rider of Cultuurzaal Daverlo in Assebroek

Part 1	Production information	3
Part 2	Contact information	7
Part 3	Cultuurzaal Daverlo – General information	8
Part 4	Cultuurzaal Daverlo – Rigging information	11
Part 5	Cultuurzaal Daverlo – Sound information	13
Part 7	Cultuurzaal Daverlo – Network information	19
Part 8	Cultuurzaal Daverlo – Video information	20
Part 9	Cultuurzaal Daverlo – Plots	21
Part 10	Cultuurzaal Daverlo – Pictures	22

Part 1

Production information

1.1. Address

Shipping / Billing address

Cultuurzaal Daverlo Assebroek
Dries 4
8310 Assebroek, Brugge

Phone reception desk : +32 (0)50 44 30 40
(open Tuesday till Friday 13pm till 17pm)

www.cbrugge.be

Loading / unloading of equipment

Dries 4
8310 Assebroek, Brugge
Belgium

Artist entrance

Dries 4
8310 Assebroek, Brugge
Belgium

Follow the R30 ring road around Bruges. At the Gentpoort, turn towards Assebroek onto Generaal Lemanlaan. After 100 meters, turn right onto Daverlostraat and follow it until you reach the roundabout. At the roundabout, turn right; the Daverlo complex is located on the right-hand side.

There are plenty of parking spaces available at the front and side of the building.

1.2. Parking info

Car / Van / Truck / Nightliner

There are plenty of parking spaces available at the front and side of the building.
Dries 4, 8310 Assebroek, Brugge

Load In / Out

- On the side of the building, there is an automatic gate (3.70m high, 2.80m wide). This gate provides access to the central backstage corridor, which also leads to the stage from the back, stage right.
- The distance from the gate to the stage floor is approximately 12m.
- The working floor is at street level.



1.3. Practical

Backstage Description

Ground floor: 2 dressing rooms
 - 1 shower
 - 2 mirrors
 - 1 table
 - 6 chairs
 2 rehearsal rooms (possibility to create 1 large room)
 2 toilets
 Video feed from stage
 1 ironing board and iron available on request



Wifi/Internet

Free Wi-Fi network available inside the venue, password provided upon request.
Fixed internet lines available on stage upon request.

Health and Safety

- Everyone working at the Cultuurzaal Daverlo is expected to observe the rules described under Working Conditions in the rules and regulations of the Occupational Health & Safety Directives (ARAB)
- Everyone working at the Cultuurzaal Daverlo is required to have his or her own Personal Protective Equipment (PPE) and to use it when necessary. Personal Protective Equipment includes protective safety footwear, helmets, hearing/eye/face protection, gloves, fall arrest harness, ...
- Only local crew is certified to use the house machinery (elevators, rigging motors, flybars, ...)
- All safety risks are evaluated per performance and Cultuurcentrum Brugge and the theatre technicians on duty reserve the right to ban unsafe items at all times.
- The Cultuurzaal Daverlo declines any responsibility in the event of accidents resulting from improper use of the infrastructure by third parties.
- Everything that is hung in must be secured by steel cables or chains.
- The Cultuurzaal Daverlo cannot be held responsible if the material introduced (décor, electrical equipment, etc.) does not meet the legal safety criteria and therefore a performance cannot take place.
- (Emergency) exits, extinguishing agents and emergency controls must be accessible at all times and must therefore not be obstructed by furniture or equipment (speakers, décor, props, flight cases, tables, chairs,...)
- Escape routes: it is forbidden in the hall and in its access and exit routes to place loose seats for the spectators or other obstructing objects (e.g. Cameras on tripod).

Restrictions

Pyrotechnics / Fireworks / Confetti / Open Fire

The Bruges fire department **strictly forbids** the use of open flames within closed venues. Fireworks/pyrotechnics or any other kinds of fires are therefore strictly prohibited in the Cultuurzaal Daverlo.

- The venue also forbids the use of any kind of confetti
- Curtains, backdrops and set pieces must be treated with flame retardant material, and must be accompanied by a certificate.
- A fire curtain is present on stage, and has to be able to close at all times!
Any obstacle that prevents the fire screen from forming a complete separation between the stage and the hall is prohibited.

Smoking

In accordance with Belgian law, there is a strict **“NO SMOKING”** policy on stage and in all public areas, including e-cigarettes. Please notify all persons concerned of this.

Haze and smoke

The use of hazers/smoke machines is allowed in consultation with the venue.

Sound restrictions and dB levels

The noise restrictions at the Cultuurzaal Daverlo are in accordance with the regulation ‘Restrictions Amplified Audio’. This regulation stipulates that audio-emissions must be restricted to **95 dB(A) LAeq15** moving average and **106dB(C) LAeq15** moving average. The Cultuurzaal Daverlo uses 10Eazy measurement and logging software to monitor the actual sound level at FOH.

Part 2

Contact information

Main contact

Main office

Phone: +32 (0)50 44 30 40 // E-mail: Cultuurcentrum@brugge.be

Director:

Filip Strobbe

Phone: +32 (0)50 32 45 45 // E-mail: filip.strobbe@brugge.be

Head of tech, infrastructure and operations:

Lieselot Decoster

Phone: +32 (0)50 44 66 20 // Mobile: +32 (0)476 60 28 80 // E-mail: lieselot.decoester@brugge.be

Coordinator theater tech (main technical contact venue rental)

Jonas Sierens

Phone: +32 (0)50 32 45 16 // Mobile: +32 (0)477 89 65 02 // E-mail: jonas.sierens@brugge.be

Expert theater tech (main technical contact Theater, Circus,)

Robbert De Neve

Phone: +32 (0)50 32 45 19 // Mobile: +32 (0)476 60 28 80 // E-mail: robbert.deneve@brugge.be

Expert theater tech (main technical contact Music, Dance)

Pieter Gadeyne

Phone: +32 (0)50 32 45 01 // Mobile: +32 (0)491 56 81 68 // E-mail: pieter.gadeyne@brugge.be

Production Dance and Theater

Senna Lefever

Phone: +32 (0)50 47 23 69 // Mobile: +32 (0)496 11 62 73 // E-mail: Senna.Lefever@brugge.be

Production Music and Circus

Liesbet Cartreul

Phone: +32 (0)50 47 53 61 // Mobile: +32 (0)478 45 28 60 // E-mail: liesbet.cartreul@brugge.be

Venue rental

Virginie Goethals

Phone: +32 (0)50 44 30 55 // E-mail: cultuurcentrum.zaalverhuur@brugge.be

Responsible reception team

Isabelle Cattoor

Phone: +32 (0)50 44 66 32 // E-mail: Isabelle.cattoor@brugge.be

Responsible Cafeteria:

Manuel Decloedt

Phone: +32 (0)50 34 25 35 // E-mail: manuel.decloedt@telenet.be

Part 3

Cultuurzaal Daverlo – General information

Dimensions	Metric	Imperial
Maximum stage size *	13,65 m wide x 20,7 m depth	44,78 ft wide x 67,91 ft depth
Stage size	13,65m wide x 11,20m depth	44,78 ft wide x 36.75 ft depth
Stage clearance	7,2 m	23,62 ft
Scene opening	13,65 m wide x 7,2 m high	44,78 ft wide x 23,62 ft high
Distance to FOH	12 m	39,37 ft
Cable run to FOH	20 m	65,62 ft

*Seating stand completely retracted

*Seating stand can't be retracted halfway

General Stage:

Stage:

Dark gray epoxy floor, NAILING AND SCREWING into the floor is NOT ALLOWED.

Dance carpet:

White or black, covering the whole stage
Extra rental price for venue rental

Intercom:

Two-channel ASL intercom system. On one hand, it is used for communication between all technical theater workstations, and on the other hand, for cue listening and calls to the dressing rooms. Connection points are installed in various locations in the auditorium and control room.

Stage risers:

24 Stage risers 2m x 1m
Legs # x 20cm
x 40cm
x 80cm – 1,3m
Stairs up to 80cm
Hand rails 20 pieces 1m wide 0.8m high
Border 1m high 10m width

Chairs/tables

16 x concert chairs
32 x Folding chairs
x Tables



Loading Facilities

1x pallet lifter max 2Ton

1x flat cart

1x ALP Lift elevator max working height 8m

Power

Back wall.

- o 1x CEE 16A / 3x400V + N / RED

- o 1x CEE 32A / 3x400V + N / RED

- (used for connecting a mobile PSU: PD-325 H 32A Power Supply)

- o 1x CEE 63A / 3x400V + N / RED (used for connecting a mobile dimmer!)

- Sufficient fixed power outlets around the auditorium (Schuko 16A, 220V)

- Stage left (Kant Jardin): 1x CEE 32A / 3x400V + N / RED fixed for rigging system!

Venue Capacity

Type	Capacity	
Sitting	232	Chairs K9, K10, K11, K12, L9, L10, L11 en L12 are removable for placing FOH
Standing	450*	*Seating stand completely retracted

Accessibility for people with disabilities

Prior notification:

- Motor disability
 - reserved spaces (ground floor) for wheelchair users.
- Visual impairment
 - Reserved seating at the front.

Parking for people with disabilities:

- There are plenty of reserved parking spaces available at the front and side of the building.

Public transportation:

- Bus stop less than 50m from the main entrance. "Assebroek Daverlopark"

Toilet:

- 2 adapted toilets for people with disabilities.

Part 4

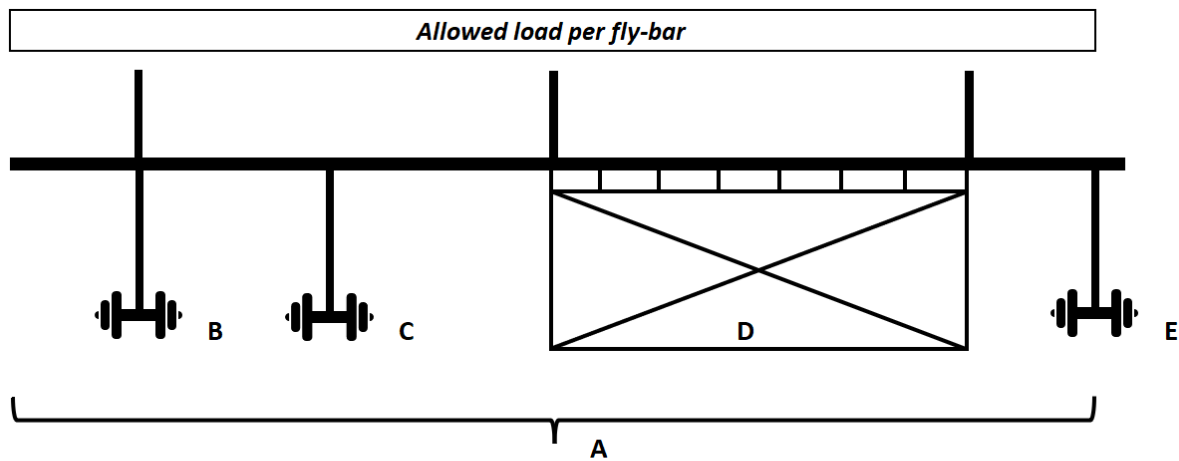
Cultuurzaal Daverlo – Rigging information

Rigging

Fly bars

6x electrical fly bars flying loads: 300Kg

- UDL 300Kg
- Point load underneath cable 150Kg
- Point load between cable 50Kg
- Equal distributed load between cables 100Kg
- Point load ends 35Kg



Type	A	B	C	D	E
	Total load	Point load under cable	point load between cable	equal distributed load between cables	point load at end
Fly-bar	300 kg	150 kg	50 kg	100 kg	35 kg
Prohibited to lift people					
A not in combination with other loads					

Front Flybar:

1x electrical fly bars flying loads: 500Kg

- UDL 500Kg
- Point load underneath cable 150Kg
- Point load between cable 150Kg
- Equal distributed load between cables 200Kg
- Point load ends 50Kg

Front truss:

1x Prolite H30V 10 m truss SWL 500Kg (black)

Rigging plot can be found Attached underneath

RIGGING INVENTORY

Cultuurzaal Daverlo

RIGGING EQUIPEMNT			
BRAND	TYPE	NUMBER	REMARKS
Softsteel SWL 2T	0,5m	4	
	1m	4	
	1,5m	4	
	2m	4	
Ratchet straps	6m	6	NOT FOR LIFTNG
Swivel clamp	500kg	10	black
Shackle	0,5 T	20	black
	1,5 T	10	black
	3,5 T	4	black

Part 5

Cultuurzaal Daverlo – Sound information

PA system

Main PA 2x D&B C7 Top per side
 3x D&B C7 Sub stacked per side

Monitors

Monitor speakers 8x D&B MAX15
Wired in-ear system 6x Behringer P1 (upon request)

Digital mixing consoles

1x Yamaha QL1 – foh console

16 local analog inputs
8 local analog outputs
1 local AES output

1x Yamaha M7CL-48 – monitor console

48 local analog inputs
4 local stereo line inputs
16 local omni outputs
1 Dante My16 AUD2 card
16 channels Dante I/O card

Digital Stage rack

Yamaha RIO 3224-D2
32 channels analog rack inputs
16 channels analog rack outputs
8 channels AES output

Yamaha RIO 1608-D2
16 channels analog rack inputs
8 channels analog rack outputs

MICROPHONE INVENTORY

Cultuurzaal Daverlo

MICROPHONES			
BRAND	TYPE	NUMBER	REMARKS
SHURE	SM58	6	
	SM58 switch	2	
	Beta 58	9	
	SM57	8	
	Beta 57a	4	
	Beta 52a	2	
	Beta 91a	2	
SENNHEISER	e-604	4	
	e-906	3	
	MD421	2	
Audio-technica	AE3000	4	
	AT4041	6	
	PRO 35	4	
NUEMANN	KM184	2	
DPA	4099	Upon Request	
	2028	Upon Request	
	4061	Upon Request	
	4066	Upon Request	
	4288	Upon Request	
WIRELESS MICROPHONES			
BRAND	TYPE	NUMBER	REMARKS
SHURE	QLXD	2	
	Antenna split	1	
	Flag antenna	2	

	QLXD1 handheld	2	
	QLXD1 beltpack	2	
	SM58 Capsule	2	for QLXD handheld
	Headset	4	Stageline HSE-110
DI BOX & OTHERS			
BRAND	TYPE	NUMBER	REMARKS
BSS	AR133	9	Active DI
RADIAL	PROD2	2	Stereo passive DI

MICROPHONE STANDS			
BRAND	TYPE	NUMBER	REMARKS
K&M	Large tele boom	10	
	small tele boom	6	
	small boom		
	kick stand	2	
	Roundbase Large		
	Roundbase table	4	
	Monitor boom	2	

CLAMPS			
BRAND	TYPE	NUMBER	REMARKS
DPA	Violin	Upon Request	
	Piano	Upon Request	
	Double bass	Upon Request	
	Guitar	Upon Request	
	trumpet	Upon Request	
	accordion	Upon Request	
	Microphone stand	Upon Request	
	drum	Upon Request	
	Universal	Upon Request	

Part 6

Cultuurzaal Daverlo – Lighting information

Light desks

1x Chamsys MQ70

10 playbacks
1 touchscreen
addition of *

*1x Execute wing

12 playbacks
36 executes

Dimmers

24 x ADB Mikapack 3KW
12 x ADB Mikapack 2KW

Haze & Fog

1x Swefog 2000 Ultimate + Fan
1x Look Unique 2.0 + Fan

Data

2x 4ch 3p/5p booster/merger

Stands and booms

4x	Ballet towers	Height	0,6m	1,2m	1,8m	2,4m
10x	Floor stands	Height	0,1m			

Lights

LIGHT INVENTORY

Cultuurzaal Daverlo

MOBILE CONVENTIONAL LIGHT									
BRAND		TYPE	NUMBER	POSITION	WATTAGE	LENS	ZOOM	IRIS	EXTRA
ADB	C201	PC Clear	8		2kW	8° / 58°	YES		BARNDOOR
	C101	PC	26		1kW	7° / 61°	YES		BARNDOOR
	HF 1001 ASS	ACP	12		1kW				
	DW105	Profile	10		1,2kW	15°/38°	YES	YES	SHUTTERS
ETC	Source 4 Zoom	Profile	10		0,75kW	25°/50°	YES	YES	SHUTTERS
JAMES THOMAS	PAR64	CP60	8		1kW	VN	*The number can vary depending on the performance. Numbers available upon request.		
		CP61	8		1kW	N			
		CP62	10		1kW	MFL			

MOBILE INTELLIGENT LIGHT									
BRAND		TYPE	NUMBER	POSITION	WATTAGE	LENS	ZOOM	IRIS	EXTRA
ClayPaky	B-eye K10	Wash	8		0,4kW	4°/60°			
	QWO800	Spot	6		1,2kW	11°/55°			

Fabrics

FABRIC INVENTORY

Cultuurzaal Daverlo

Fabrics					
Type	Number	hight (m)	wide (m)	Color	Fabric
Borders	2	1,5	14,5	Dark Green	Velvet
Legs	6	7	4,5	Dark Green	Velvet
Backdrop	1	7	13,65	Black	Velvet
Movie screen	1	4	6	White	PVC

Part 7

Cultuurzaal Daverlo – Network information

Switches

2x Netgear ProSafe 8-Port Gigabit Desktop Switch

Fixed cabling

TYPE	NUMER	FROM	TO
Cat6-SFTP	6	Patchrack	FOH
Cat6-SFTP	4	Patchrack	Stage Left
Cat6-SFTP	4	Patchrack	Stage Right
Cat6-SFTP	2	Patchrack	FOH (video)

Mobile cabling

Cat5-UTP (various lengths)

Cat6-SFTP (various lengths)

1x Cat5-UTP 25m

Accessories

1x Ethercon to 4x XLR 3p set

1x Ethercon to 4x XLR 5p set

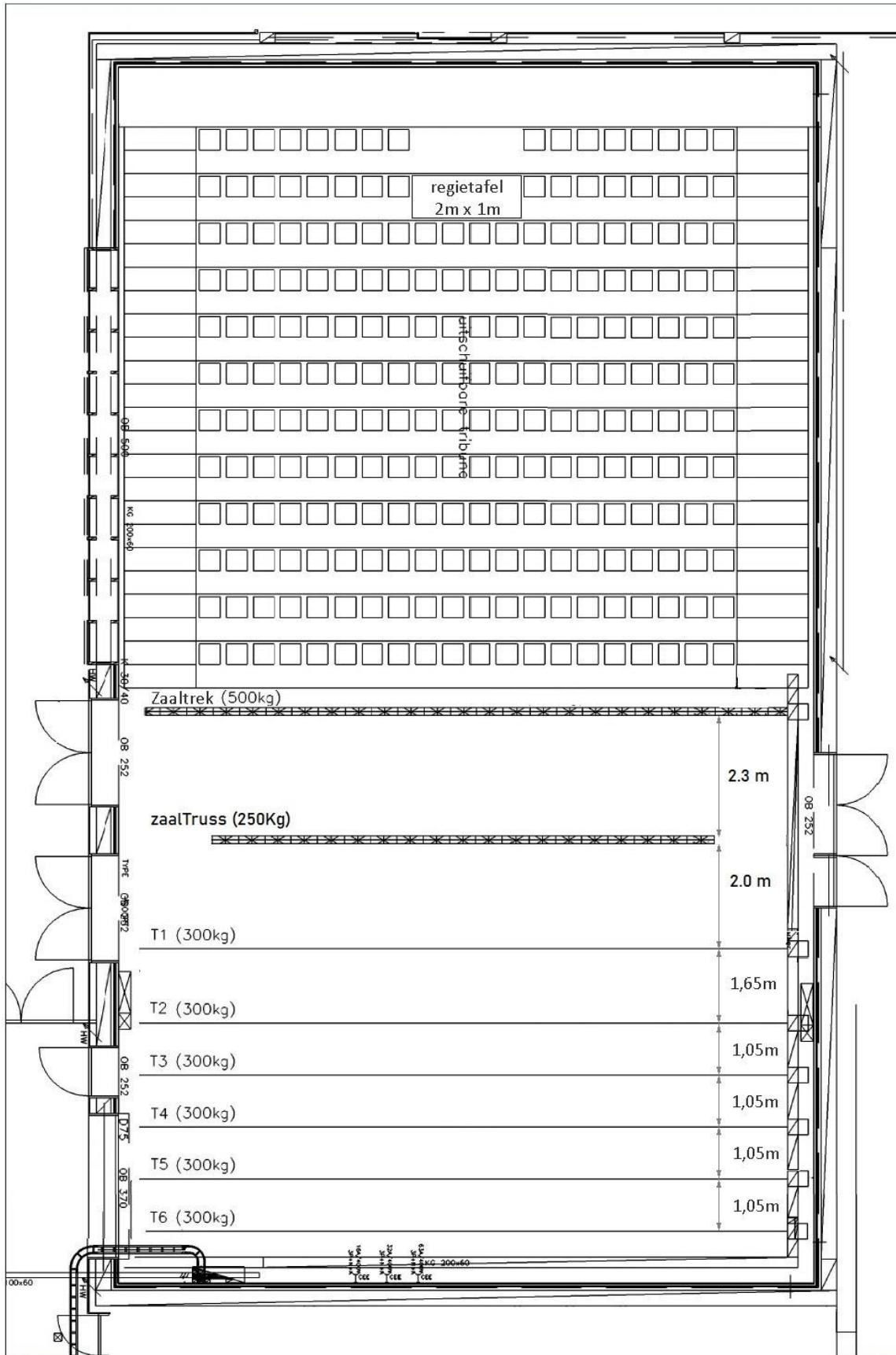
4x Ethercon coupler

Cultuurzaal Daverlo – Video information

VIDEO INVENTORY Cultuurzaal Daverlo

PROJECTORS			
BRAND	TYPE	NUMBER	REMARKS
PANASONIC	PT-RZ970	1	10K LASER WUXGA
		1	Flyframe
LENSES			
BRAND	TYPE	NUMBER	REMARKS
PANASONIC	DLE50	Upon Request	0,8
	DLE100	Upon Request	1,3 - 1,8
	Standard	1	1,8 - 2,4
	DLE250	1	2,3 - 3,6
	DLE350	Upon Request	3,6 - 5,5
	DLE410	Upon Request	4,7 - 8,9
MIXERS			
BRAND	TYPE	NUMBER	REMARKS
Roland	V8 Mixer	Upon Request	
	V4 Mixer	Upon Request	
	V40-HD	Upon Request	
CABLING & CONVERTORS			
BRAND	TYPE	NUMBER	REMARKS
TECHLY	HMDI - UTP sender	2	MAX 1920/1080@60Hz
	HMDI - UTP receiver	3	MAX 1920/1080@60Hz
PROCAB	HMDI	#	1,5m/3m/5m/10m
	DVI	#	1,5m/3m/5m/10m
	VGA	#	1,5m/3m/5m/10m
	HDMI to DVI	4	
	DVI to HDMI	4	
SCREENS			
BRAND	TYPE	NUMBER	REMARKS
	Screen 4x6m	1	White

Cultuurzaal Daverlo – Plots



Cultuurzaal Daverlo – Pictures

