

Koninklijke **STADS**  
**SCHOUW**  
**BURG** Brugge

2024



2025

**CCBRUGGE.BE**

Technical rider  
Royal City Theater Bruges

# **This is the production and technical rider of The Royal City Theater in Bruges**

<b>Part 1</b>	<b>Production information</b>	<b>3</b>
<b>Part 2</b>	<b>Contact information</b>	<b>7</b>
<b>Part 3</b>	<b>Royal City Theater – General information</b>	<b>8</b>
<b>Part 4</b>	<b>Royal City Theater – Rigging information</b>	<b>11</b>
<b>Part 5</b>	<b>Royal City Theater – Sound information</b>	<b>13</b>
<b>Part 7</b>	<b>Royal City Theater – Network information</b>	<b>22</b>
<b>Part 8</b>	<b>Royal City Theater – Video information</b>	<b>23</b>
<b>Part 9</b>	<b>Royal City Theater – Plots</b>	<b>23</b>
<b>Part 10</b>	<b>Royal City Theater – Pictures</b>	<b>32</b>

## Part 1

# Production information

## 1.1. Address

### Shipping / Billing address

Koninklijke Stadsschouwburg Brugge  
Vlamingstraat 29  
8000 Brugge

Phone reception desk : +32 (0)50 44 30 40  
(open Tuesday till Friday 13pm till 17pm)

[www.ccbbrugge.be](http://www.ccbbrugge.be)

---

### Loading / unloading of equipment

Adriaan Willaertstraat  
8000 Brugge  
Belgium

### Artist entrance

Kuiperstraat 16  
8000 Brugge  
Belgium

Trucks and trailers may only enter the city center with a proof of passage!

Arrival route: Zuidzandstraat, Steenstraat, Markt, Vlamingstraat, Adriaan Willaertstraat

Departure route: Adriaan Willaertstraat, Kuipersstraat, Eiermarkt, Noordzandstraat, Geldmuntstraat, 't Zand, Hoefijzerlaan towards Bloedput, highway

Proof of passage is available on request

---



Entering the City center with trucks and trailers is **NOT** possible from 13pm till 18pm

## 1.2. Parking info

### Car / Van / Truck / Nightliner

Parking lane of approximately 45m only available for vehicles with technical equipment of the visiting performer at the side of the Royal City Theater.

Parking is only possible with a valid parking permit.

At least 1 week in advance, type of vehicle, license plate, name and telephone number of driver must be provided

No permit = No parking

16A 230V, 32A 400V available on request

---

### Car

If the parking lane is full, cars can be relocated to the underground Interparking "Biekorf"

Parking vouchers can be provided on request. (not available for venue rental)

Naaldenstraat 8

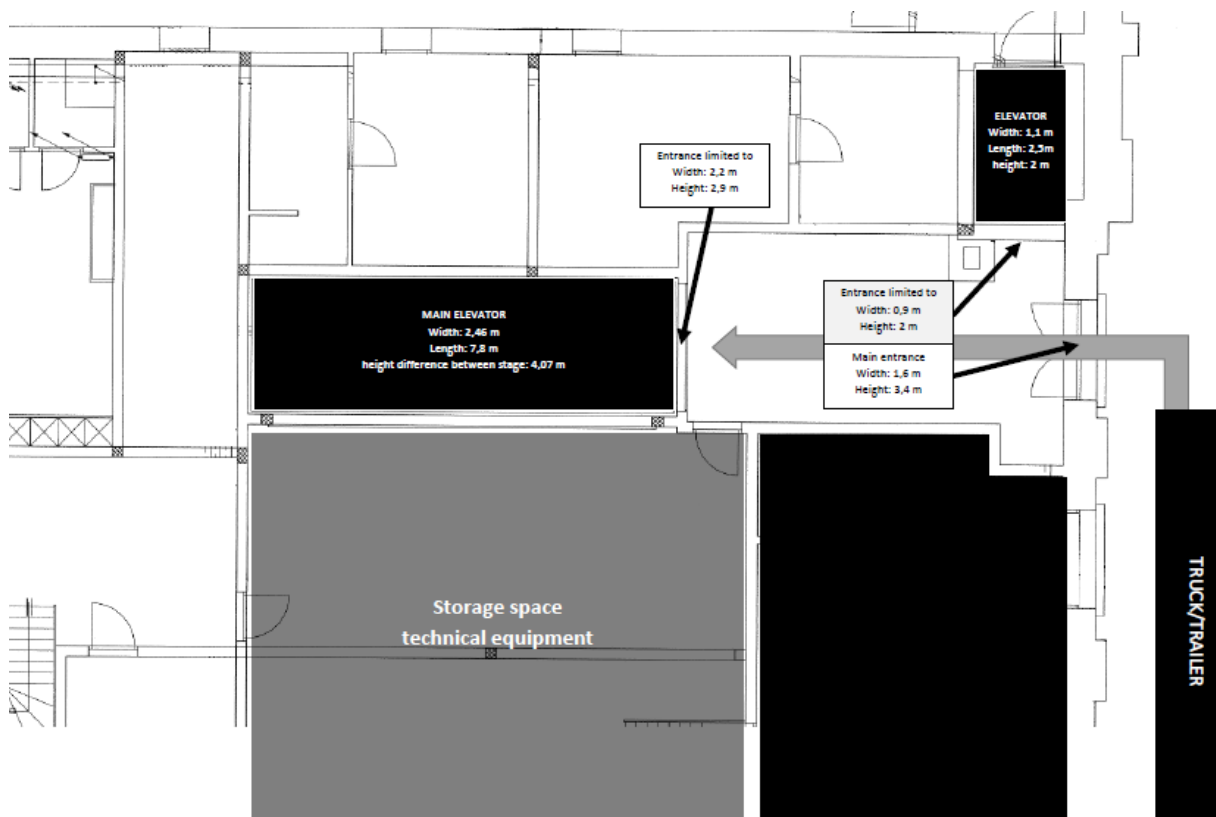
8000 Bruges

Belgium

located at 500m from the theatre, only for passenger cars (max height 2m)

---

### Load In / Out



## 1.3. Practical

### Backstage Description

- 1<sup>st</sup> floor:            Artist's foyer with bar, tables and chairs (open on request for venue rental)  
                          4 small dressing rooms  
                          2 showers, 1 toilet  
                          Video feed from stage  
                          1 ironing board and iron available on request
- 2<sup>nd</sup> floor:            1 large dressing room  
                          4 small dressing rooms  
                          2 showers, 1 toilet
- 3<sup>rd</sup> floor:            1 VIP dressing room with couch and private shower  
                          2 showers, 1 toilet
- 4<sup>th</sup> floor:            1 large dressing room  
                          2 medium dressing rooms

All dressing rooms contain:

- Lockable cabinets
- Chairs, grime tables, mirrors and sink.

---

### Wifi/Internet

Free Wi-Fi network available inside the venue, password provided upon request.  
Fixed internet lines available on stage upon request.

---

### Health and Safety

- Everyone working at the Royal city theater is expected to observe the rules described under Working Conditions in the rules and regulations of the Occupational Health & Safety Directives (ARAB)
- Everyone working at the Royal city theater is required to have his or her own Personal Protective Equipment (PPE) and to use it when necessary. Personal Protective Equipment includes protective safety footwear, helmets, hearing/eye/face protection, gloves, fall arrest harness, ...
- Only local crew is certified to use the house machinery (elevators, rigging motors, flybars, ...)
- All safety risks are evaluated per performance and Cultuurcentrum Brugge and the theatre technicians on duty reserve the right to ban unsafe items at all times.
- The Royal City Theater declines any responsibility in the event of accidents resulting from improper use of the infrastructure by third parties.
- Everything that is hung in must be secured by steel cables or chains.
- The Royal City Theater cannot be held responsible if the material introduced (décor, electrical equipment, etc.) does not meet the legal safety criteria and therefore a performance cannot take place.
- (Emergency) exits, extinguishing agents and emergency controls must be accessible at all times and must therefore not be obstructed by furniture or equipment (speakers, décor, props, flight cases, tables, chairs,...)
- Escape routes: it is forbidden in the hall and in its access and exit routes to place loose seats for the spectators or other obstructing objects (e.g. Cameras on tripod).

## Restrictions

### Pyrotechnics / Fireworks / Confetti / Open Fire

The Bruges fire department **strictly forbids** the use of open flames within closed venues. Fireworks/pyrotechnics or any other kinds of fires are therefore strictly prohibited in the Royal City Theater.

- The venue also forbids the use of any kind of confetti
- Curtains, backdrops and set pieces must be treated with flame retardant material, and must be accompanied by a certificate.
- A fire curtain is present on stage, and has to be able to close at all times!  
**Any obstacle that prevents the fire screen from forming a complete separation between the stage and the hall is prohibited.**

### Smoking

In accordance with Belgian law, there is a strict **“NO SMOKING”** policy on stage and in all public areas, including e-cigarettes. Please notify all persons concerned of this.

### Haze and smoke

The use of hazers/smoke machines is allowed in consultation with the venue.

### Sound restrictions and dB levels

The noise restrictions at the Royal City Theater are in accordance with the regulation ‘Restrictions Amplified Audio’. This regulation stipulates that audio-emissions must be restricted to **95 dB(A) LAeq15** moving average and **106dB(C) LAeq15** moving average. The Royal City Theater uses 10Eazy measurement and logging software to monitor the actual sound level at FOH.

### Emergency and exit lights

**The Royal City Theater is equipped with red LED lighting on the floor and emergency lighting that lights up during the performance. These lights can never be turned off. No exceptions are made.**

## Part 2

# Contact information

### Main contact

#### Main office

Phone: +32 (0)50 44 30 40 // E-mail: [Cultuurcentrum@brugge.be](mailto:Cultuurcentrum@brugge.be)

#### Director:

Filip Strobbe

Phone: +32 (0)50 32 45 45 // E-mail: [filip.strobbe@brugge.be](mailto:filip.strobbe@brugge.be)

---

#### Head of tech, infrastructure and operations:

Lieselot Decoster

Phone: +32 (0)50 44 66 20 // Mobile: +32 (0)476 60 28 80 // E-mail: [lieselot.decoester@brugge.be](mailto:lieselot.decoester@brugge.be)

#### Coordinator theater tech (main technical contact venue rental)

Jonas Sierens

Phone: +32 (0)50 32 45 16 // Mobile: +32 (0)477 89 65 02 // E-mail: [jonas.sierens@brugge.be](mailto:jonas.sierens@brugge.be)

#### Expert theater tech (main technical contact Theater, Circus,)

Robbert De Neve

Phone: +32 (0)50 32 45 19 // Mobile: +32 (0)476 60 28 80 // E-mail: [robbert.deneve@brugge.be](mailto:robbert.deneve@brugge.be)

#### Expert theater tech (main technical contact Music, Dance)

Pieter Gadeyne

Phone: +32 (0)50 32 45 01 // Mobile: +32 (0)491 56 81 68 // E-mail: [pieter.gadeyne@brugge.be](mailto:pieter.gadeyne@brugge.be)

---

#### Production Dance and Theater

Senna Lefever

Phone: +32 (0)50 47 23 69 // Mobile: +32 (0)496 11 62 73 // E-mail: [Senna.Lefever@brugge.be](mailto:Senna.Lefever@brugge.be)

#### Production Music and Circus

Liesbet Cartreul

Phone: +32 (0)50 47 53 61 // Mobile: +32 (0)478 45 28 60 // E-mail: [liesbet.cartreul@brugge.be](mailto:liesbet.cartreul@brugge.be)

---

#### Venue rental

Virginie Goethals

Phone: +32 (0)50 44 30 55 // E-mail: [cultuurcentrum.zaalverhuur@brugge.be](mailto:cultuurcentrum.zaalverhuur@brugge.be)

---

#### Responsible reception team

Isabelle Cattoor

Phone: +32 (0)50 44 66 32 // E-mail: [Isabelle.cattoor@brugge.be](mailto:Isabelle.cattoor@brugge.be)

#### Manager Foyer:

Bernard De Pape

Phone: +32 (0)496 97 78 84 // E-mail: [bdpvespatours@gmail.com](mailto:bdpvespatours@gmail.com)

## Part 3

# Royal City Theater – General information

Dimensions	Metric	Imperial
Maximum stage size	20 m wide x 13 m depth	65,5 ft wide x 42,6 ft depth
Apron size	12,5 m wide x 6 m depth	41 ft wide x 19,6 ft depth
Stage clearance	13 m	42.6 ft
Scene opening	10 m wide x 8,3 m high	32,8 ft wide x 27,2 ft high
Distance to FOH	16 m	52,5 ft
Cable run to FOH	40 m	131,2 ft
<b>FLOOR SLOPE</b>	<b>3%</b>	<b>3%</b>

---

### General Stage:

#### Stage:

Black wooden sprung floor

#### Orchestra Pit:

2.3m under stage floor

Maximum number of musicians 25 to 30.

Cannot be removed and is a fixed part of the stage

Not possible to use as audience seating

#### Dance carpet:

White or black, covering the whole stage

**Rental price for venue rental: 170€**

#### Intercom:

Masterstation with dual channel A-B Altair WBS-202HD

6 single channel A-B beltpack Altair WBP-210 HD

2 dual channel A-B beltpack Altair WBP-212 HD

Mono and Stereo Headsets + mic

3 Call lights

Cue-light system with standby-go function on 4 positions

#### Stage risers:

30 Stage risers 2m x 1m

Legs 60x 20cm

20x 40cm

60x 60cm – 1m

Stairs up to 80cm

Hand rails 28 pieces 1m wide 0.8m high

#### Chairs

67 concert chairs

8 bar stools

#### Piano:

Steinway & Sons, Grand D, Concert Piano

**Rental price for venue rental: 290€, tuning included**



---

## Loading Facilities

### Elevators:

1x freight lift, part of stage floor

Dimensions doors: 2,2 m wide x 2,9 m high

Dimensions platform: 2,46 m wide x 7,8 m depth

Max payload: 8.000 Kg

Height difference between street and stage: 4,07 m

Building scenery at depth is only possible after all stage supplies are on stage!

**Not for transporting people!**

1x passenger lift

Lift opening: 0,8 m wide x 1,96 m high

Lift cage: 1 m wide x 2,2 m high x 2,5m depth

2x pallet lifter max 2Ton

1x flat cart

1x ALP Lift elevator max working height 10m

---

## Power

Separate electrical power supply 400V

2x CEE 400V/125A (3p+N+PE) Stage Right

2x CEE 400V/125A (3p+N+PE) Stage Left

Power supply Units:

Stage Right:

- 125A in – 125A link out
- 2x 63A out
- 4x 32A out
- 2x 16A out
- 24x Schuko Type F (edge grounded)
- 8x 16A CEE
- 4x Han16
- 4x Han10

Stage Left:

- 125A in – 125A link out
- 2x 63A out
- 6x 32A out
- 8x Schuko Type F (edge grounded)
- 1x Han16
- 1x Han10

---

## Venue Capacity

Type	Capacity	Dance mode	Limited view
Parterre	283	236	14
1 <sup>st</sup> balcony	109	75	6
2 <sup>nd</sup> balcony	97	67	4
3 <sup>rd</sup> balcony	101	55	8
4 <sup>th</sup> balcony	93	37	22
<b>Total</b>	<b>655</b>	<b>470</b>	<b>54</b>

---

## Accessibility for people with disabilities

### Prior notification:

- Motor disability
  - 4 reserved spaces (ground floor) for wheelchair users.
- Visual impairment
  - Reserved seating at the front.

### Evacuation safety:

- Possibility to evacuate wheelchair users via the stairs using an evacuation chair (located in the technician's room).

### Parking for people with disabilities:

- On the public road
  - A designated lane with 2 parking spaces on Adriaan Willaertstraat.
  - Parking on the streets and squares in the vicinity is paid from 9am to 8pm. Holders of a disability card do not have to pay at these paid parking spaces, provided that the card is clearly visible and legible behind the windshield.
- In the public underground parking "Biekorf"

### Public transportation:

- Bus stop less than 20m from the main entrance. With a raised boarding and alighting platform.
- Weekday evening lines until 11:10pm, and until 2:10am on weekends.

### Ticket counter:

- Entrance via a sloping ramp
- Automatic door

### Elevator:

- Elevator goes up to the 2nd floor in the public area

### Toilet:

- 2 adapted toilets for people with disabilities.

Part 4

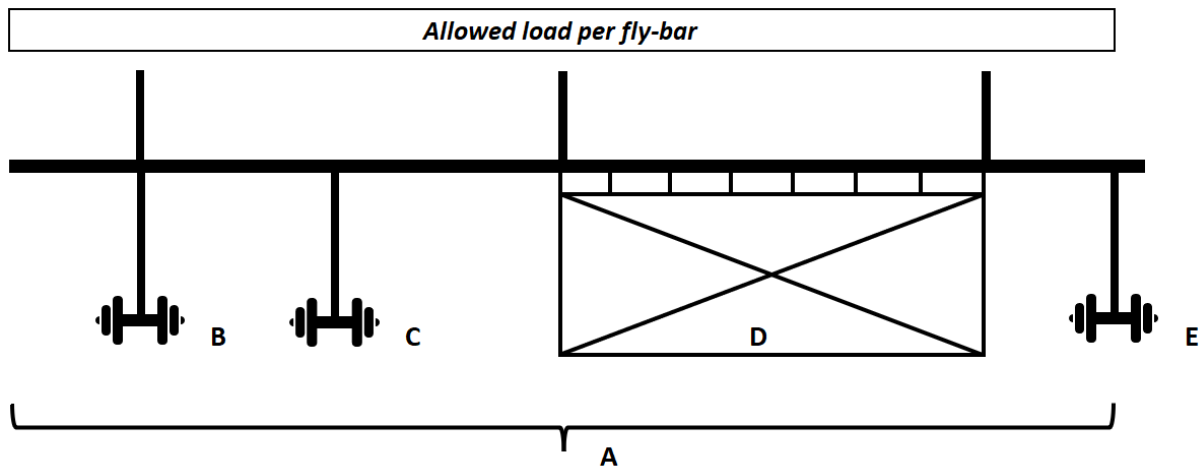
# Royal City Theater – Rigging information

## Rigging

### Fly bars SIL3

32x electrical fly bars flying loads: 300Kg max speed 1,1 m/s

- UDL 300Kg
- Point load underneath cable 150Kg
- Point load between cable 100Kg
- Point load ends 30Kg



Type	A	B	C	D	E
	Total load	Point load under cable	point load between cable	equal distributed load between cables	point load at end
Fly-bar	300 kg	150 kg	100 kg	100 kg	30 kg
Prohibited to lift people					
A not in combination with other loads					

### Motors:

8x motors SWL 500Kg

4 on stage Left, 4 on stage Right, freely placeable between fly bars 6 to 27.  
Limited to 4 spaced on 1 line

### Proscenium:

1x Prolyte H30V 10 m truss SWL 500Kg (black)

### Portal Bridge

Movable in height between 1 m and 8,3 m SWL 500Kg

### Side Fly bars SIL3

4x electrical fly bars flying loads: 300Kg not computer controlled

- Stage left: SWL 300Kg max height 5,3 m
- Stage left: SWL 300Kg max height 6,6 m
- Stage right: SWL 300Kg max height 6,6 m
- Stage right: SWL 300Kg max height 5,3 m

Rigging plot can be found Attached underneath

## Rigging Equipment

RIGGING EQUIPEMNT			
BRAND	TYPE	NUMBER	REMARKS
Softsteel SWL 2T	0,5m	8	
	1m	12	
	1,5m	8	
	2m	8	
Steel SWL 420Kg	1m	10	
	2m	10	
	4m	10	
	6m	10	
Ratchet straps	6m	10	NOT FOR LIFTNG
Swivel clamp	500Kg	18	black
Reutlinger	8m, Max 90Kg	12	20cm - 8m adjustable
Prolyte	Single Tube 0,5m	6	black
	Single Tube 1m	6	black
	Single Tube 2m	6	black
	Baseplate H30/H40	6	black
Doughty	drop arm stirrup	12	black
Shackle	0,5 T	20	black
	1,5 T	20	black
	3,5 T	10	black
Yamaha	M4 Fly frame	6	

## Part 5

# Royal City Theater – Sound information

## PA system

Main PA	3x D&B Qi7 flown per side 3x D&B Q-sub stacked per side amplified by D&B 30D
Center	3x D&B Qi7 amplified by D&B 30D
Front fill	4x D&B E3 amplified by D&B D20

---

## Monitors

Monitor speakers	12x D&B M4 amplified by D&B D20
Wired in-ear system	6x Behringer P1

---

## Digital mixing consoles

### 1x Yamaha CL5 – foh console

- 8 local analog inputs
- 8 local analog outputs
- 1 local AES output

### 1x Yamaha QL1 – foh console

- 16 local analog inputs
- 8 local analog outputs
- 1 local AES output

### 1x Yamaha M7CL-48 – monitor console

- 48 local analog inputs
- 4 local stereo line inputs
- 16 local omni outputs
- 1 Dante My16 AUD2 card  
16 channels Dante I/O card

## Digital Stage rack

- Yamaha RIO 3224-D2
  - 32 channels analog rack inputs
  - 16 channels analog rack outputs
  - 8 channels AES output

- Yamaha RIO 1608-D2
  - 16 channels analog rack inputs
  - 8 channels analog rack outputs

**MICROPHONE  
INVENTORY  
Royal City Theater  
Bruges**

<b>MICROPHONES</b>			
<b>BRAND</b>	<b>TYPE</b>	<b>NUMBER</b>	<b>REMARKS</b>
SHURE	SM58	6	
	SM58 switch	2	
	Beta 58a	5	
	SM57	3	
	Beta 57a	2	
	Beta 52a	2	
	Beta 87a	5	
	Beta 91	5	
	Beta 91a	2	
SENNHEISER	e904	6	
	e906	2	
	MD421	2	
	MKE2	1	
AKG	D112	2	
	C451 CK1	2	
	SE300B CK93	3	
	C416L	3	
	C419	4	
	C3000 B	3	
	414 XLII	1	Stereo set
NUEMANN	KMS105	1	
	KM184	3	Stereo set
	KM184	1	
DPA	4099	5	
	2028	1	
	4061	4	
	4066	2	omni-directional headset
	4288	2	directional headset
AUDIX	i5	1	
	D2	2	
	D4	1	
	D6	1	

WIRELESS MICROPHONES			
BRAND	TYPE	NUMBER	REMARKS
SHURE	QLXD	6	
	Antenna split	1	
	Flag antenna	2	
	QLXD1 handheld	6	
	QLXD1 beltack	6	
	Beta 58 Capsule	6	for QLXD handheld
KSM9 Capsule	2	for QLXD handheld	

DI BOX & OTHERS			
BRAND	TYPE	NUMBER	REMARKS
BSS	AR133	10	Active DI
RADIAL	PROD2	3	Stereo passive DI
Stageline	DIB-100	2	Passive DI

MICROPHONE STANDS			
BRAND	TYPE	NUMBER	REMARKS
K&M	Large tele boom	15	
	Large long boom	10	
	Small tele boom	8	
	Small boom	5	
	Kick stand	3	
	Roundbase Large	3	
	Roundbase small	2	With tele boom
	Roundbase table	4	
	Roundbase table	3	mini
	Stereo bridge	3	

CLAMPS			
BRAND	TYPE	NUMBER	REMARKS
DPA	Violin	4	
	Piano	2	
	Double bass	1	
	Guitar	6	
	Trumpet	5	
	Accordion	2	
	Microphone stand	2	
	Drum	3	
	Universal	5	

## Part 6

# Royal City Theater – Lighting information

## Light desks

### 1x Chamsys MQ500

15 playbacks  
15 executes  
2 touchscreens  
addition of \*

### \*1x Chamsys Stadium wing

15 playbacks  
15 executes  
1 touchscreen

### \*1x Playback wing

24 playbacks

### 1x ETC ION

2x 20 fader wing

---

## Dimmers

### 218 x ETC Sensor 3 Thru power 2,3kW

All channels can be switched to provide 10A fixed power

#### Fixed channels:

48x	2,3kW CEE Front light
7x	2,3kW CEE Stage apron
8x	2,3kW CEE Manteau
29x	2,3kW CEE Portal
40x	2,3kW CEE Stage floor

#### Mobile channels:

14x	Han10 - 5 x 2,3kW CEE Stage
14x	2,3kW CEE Stage
6x	5kW ADB Memopack30

---

## Haze & Fog

1x Swefog 3000 Ultimate + Fan  
1x Look Unique 2.0 + Fan

Using large amounts of smoke is **not** possible. If required contact us A.S.A.P. to discuss the possibility's.

---

## Data

2x	4ch 3p/5p booster/merger	Stage Left
2x	4ch 3p/5p booster/merger	Stage Right
3x	4ch 3p/5p booster/merger	Mid-Stage Right
1x	Luminex Node 8	Stage Right



### Stands and booms

10x	Ballet towers	Height	0,6m	1,2m	1,8m	2,4m
20x	Floor stands	Height	0,1m			
6x	Floor stands	Height	0,8m			
2x	Lowering T pipe	Height	2,5m			

---

### Lights

# LIGHT INVENTORY

## Royal City Theater Bruges

FIXED FRONTLIGHT									
NO FIXTURES WILL BE ADDED, REMOVED OR REPLACED AT ANY GIVEN TIME									
3rd balcony: 16x 2,3KW									
BRAND		TYPE	NUMBER	POSITION	WATTAGE	LENS	ZOOM	IRIS	EXTRA
Niethammer	HPZ 215	Profile	8	Center	2kW	15°/40°	YES	YES	SHUTTERS
ADB	C201	PC	4	Stage Left	2kW	12°/51°	YES		BARNDOOR
	C201	PC	4	Stage Right	2kW	12°/51°	YES		BARNDOOR
2nd balcony: 20x 2,3KW									
BRAND		TYPE	NUMBER	POSITION	WATTAGE	LENS	ZOOM	IRIS	EXTRA
Niethammer	HPZ 215	Profile	2	Stage Left	2kW	15°/40°	YES	YES	SHUTTERS
	HPZ 215	Profile	2	Stage Right	2kW	15°/40°	YES	YES	SHUTTERS
ADB	C201	PC	6	Stage Left	2kW	12°/51°	YES		BARNDOOR
	C201	PC	6	Stage Right	2kW	12°/51°	YES		BARNDOOR
1st balcony: 8x 2,3KW									
BRAND		TYPE	NUMBER	POSITION	WATTAGE	LENS	ZOOM	IRIS	EXTRA
VariLite	VL500 Ext. Dim	VL500	2	Stage Left	1kW				
	VL500 Ext. Dim	VL500	2	Stage Right	1kW				

MOBILE CONVENTIONAL LIGHT									
BRAND	TYPE	NUMBER	POSITION	WATTAGE	LENS	ZOOM	IRIS	EXTRA	
ADB	C201	PC	20		2kW	12°/51°	YES		BARNDOOR
	C101	PC	32		1kW	12°/51°	YES		BARNDOOR
	SH50	Fresnel	3		5kW	12°/51°	YES		BARNDOOR
	F201	Fresnel	12		2kW	12°/51°	YES		BARNDOOR
	F101	Fresnel	24		1kW	12°/51°	YES		BARNDOOR
	TTH	Fresnel	10		1kW	12°/51°	YES		BARNDOOR
	HF1000	ACP	16		1kW				4x4 Pre rigged
	HF 1001 ASS	ACP	22		1kW				
	DW105	Profile	30		1,2kW	15°/38°	YES	YES	SHUTTERS
	DVW105	Profile	4		1,2kW	38°/57°	YES	YES	SHUTTERS
ETC	Source 4 Zoom	Profile	20		0,75kW	25°/50°	YES	YES	SHUTTERS
JAMES THOMAS	PAR64	CP60	20*		1kW	VN	*The number can vary depending on the performance. Numbers available upon request.		
		CP61	24*		1kW	N			
		CP62	43*		1kW	MFL			
		CP95	8*		1kW	VWFL			
SHOWTEC	T-36	Pinspot	12		30W				

MOBILE INTELLIGENT LIGHT									
BRAND		TYPE	NUMBER	POSITION	WATTAGE	LENS	ZOOM	IRIS	EXTRA
ClayPaky	B-eye K10	Wash	12		0,4kW	4°/60°			
Ayrton	Diablo	Spot/Profile	12		0,55kW	7°/53°			
VariLite	VL500	Beam/Wash	8		1kW				
ROBE	Robe150	Wash	12		0,22kW	3,8°/60°			
Martin	Atomic 3000	Strobe	1		3kW				
SHOWTEC	Sunstrip LED	Blinder	4		0,2kW				

**Fabrics****FABRIC INVENTORY  
Royal City Theater Bruges**

<b>Fabrics</b>					
<b>Type</b>	<b>Number</b>	<b>hight (m)</b>	<b>wide (m)</b>	<b>Color</b>	<b>Fabric</b>
Front Curtain	1	10	11	Red	Velvet
Borders	6	2,5	16	Black	Velvet
Legs	16	8	4,2	Black	Velvet
Legs	6	6	4,2	Black	Velvet
Backdrop	1	6	15	Grey	Velvet
Backdrop	1	6	15	Red	Velvet
Backdrop	1	6	15	Gold	Velvet
Backdrop	1	6	15	Light blue	Velvet
Cyclorama	1	8	14	White	Cotton
Cyclorama	1	6	14	White	Cotton
Gauze cloth	1	6	14	White	
Gauze cloth	2	6	14	Black	
Gauze cloth	2	8	14	Black	
Movie screen	1	6	14	White	PVC

## Part 7

# Royal City Theater – Network information

## Switches

### 3x Luminex Giga core 12 PoE+

Permanently installed Stage Left, Stage Right, and FOH

### 1x Luminex Giga core 26i

Permanently installed Stage Right

### 1x Yamaha SWP1-8

Permanently installed Stage Right

## Fixed cabling

TYPE	NUMER	FROM	TO
Cat6-SFTP	4	Stage Right	FOH
Cat6-SFTP	4	Stage Right	Stage Left
Cat6-SFTP	2	Stage Right	Mid Stage Right
Cat6-SFTP	2	Stage Right	Orchestra Pit
Cat6-SFTP	2	Stage Right	Upstage Stage Left
Cat6-SFTP	2	Stage Right	Upstage Center
Cat6-SFTP	2	Stage Right	Upstage Stage Right
Cat6-SFTP	2	Stage Right	Front Stage Left
Cat6-SFTP	2	Stage Right	Front Stage Right
Cat6-SFTP	1	Stage Right	Portal Bridge
Cat6-SFTP	2 (redundant trunk Luminex)	Stage Right	Stage Left
Cat6-SFTP	2 (redundant trunk Luminex)	Stage Right	FOH
Cat6-SFTP	2 (redundant trunk Luminex)	Stage Left	FOH

## Mobile cabling

Cat5-UTP (various lengths)

Cat6-SFTP (various lengths)

1x Cat5-UTP 25m

2x Cat5-UTP 50m

## Accessories

1x Ethercon to 4x XLR 3p set

1x Ethercon to 4x XLR 5p set

10x Ethercon coupler

Part 8

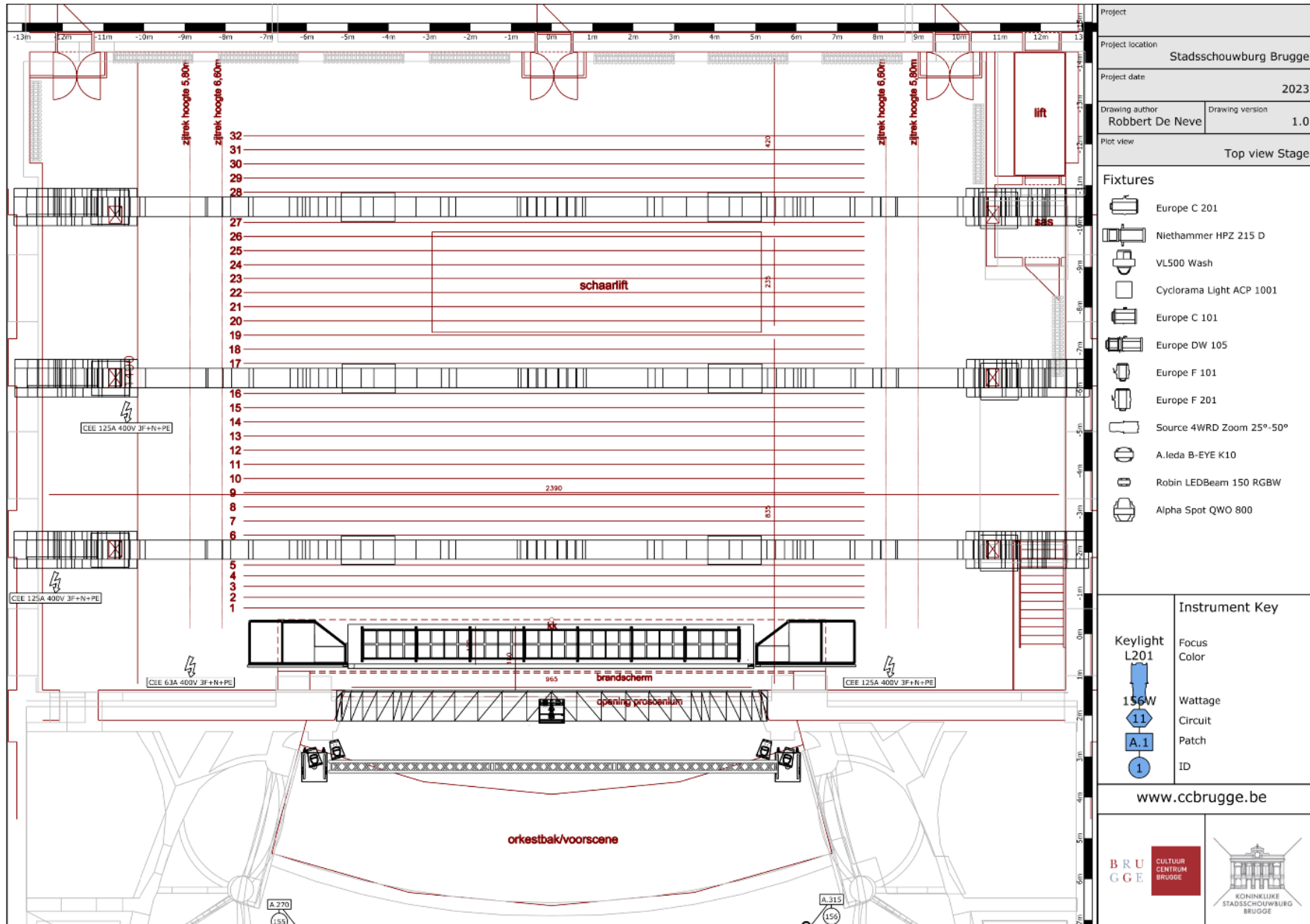
# Royal City Theater – Video information

VIDEO INVENTORY  
Royal City Theater Bruges

PROJECTORS			
BRAND	TYPE	NUMBER	REMARKS
EPSON	EB-PI2220B	1	20K LASER WUXGA
	ELPEC 01	1	CAM
	FLYFRAME	1	stackable
LENSES			
BRAND	TYPE	NUMBER	REMARKS
EPSON	ELPLU03S	1	0,48 - 0,57
	ELPLM15	1	1,57 - 2,56
	ELPLM10	1	2,43 - 3,71
	ELPLM11	1	3,54 - 5,41
MIXERS			
BRAND	TYPE	NUMBER	REMARKS
Roland	V8 Mixer	1	
	V4 Mixer	1	
	V40-HD	1	
CABLING & CONVERTORS			
BRAND	TYPE	NUMBER	REMARKS
ALLTEQ	HMDI - UTP sender	2	MAX 1920/1080@60Hz
	HMDI - UTP receiver	3	MAX 1920/1080@60Hz
PROCAB	HMDI	#	1,5m/3m/5m/10m
	DVI	#	1,5m/3m/5m/10m
	VGA	#	1,5m/3m/5m/10m
	HDMI to DVI	4	
	DVI to HDMI	4	
SCREENS			
BRAND	TYPE	NUMBER	REMARKS
AV STUMPFL	FF 4m x 3m	1	FRONT
	FF 4m x 3m	1	RETRO
	FF 3m x 1.7m	1	FRONT/RETRO
SHOWTEX	14m x 8m	1	FRONT/RETRO
ACCESSORIES			
BRAND	TYPE	NUMBER	REMARKS
SHINYBOW	SB1104	1	VGA spliiter 4-way
WAHLBERG	DMX shutter	1	
NUMARK	VM03 MKII	1	preview screen
DMT	DLD-72 MKII DUAL	1	2x 7" LCD display

Part 9

# Royal City Theater – Plots



Project	
Project location Stadsschouwburg Brugge	
Project date 2023	
Drawing author Robbert De Neve	Drawing version 1.0
Plot View Top view Stage	

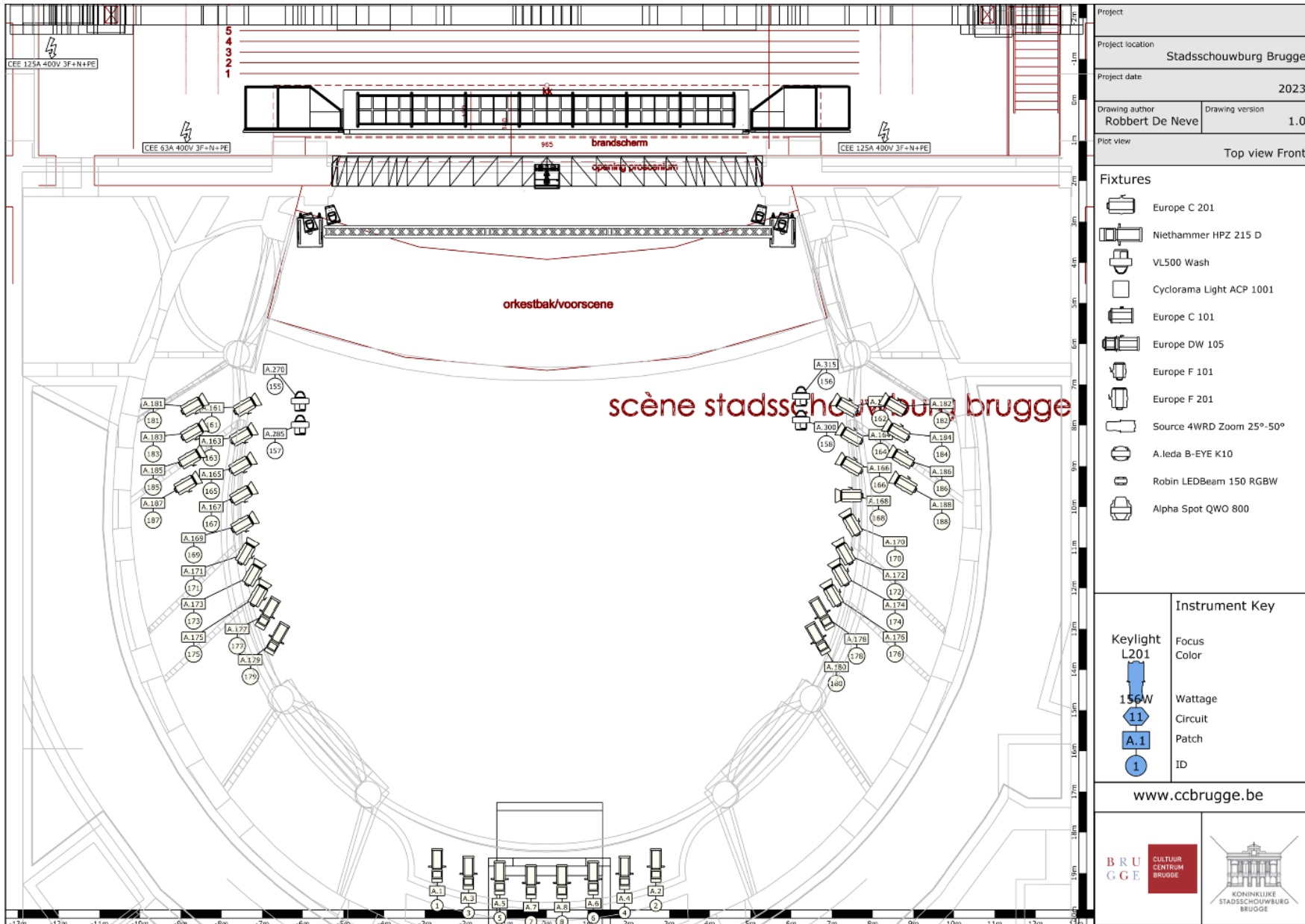
Fixtures	
	Europe C 201
	Niethammer HPZ 215 D
	VL500 Wash
	Cyclorama Light ACP 1001
	Europe C 101
	Europe DW 105
	Europe F 101
	Europe F 201
	Source 4WRD Zoom 25°-50°
	A.leda B-EYE K10
	Robin LEDBeam 150 RGBW
	Alpha Spot QWO 800

Instrument Key	
	Focus
	Color
	Wattage
	Circuit
	Patch
	ID

[www.cbrugge.be](http://www.cbrugge.be)







Project	
Project location Stadsschouwburg Brugge	
Project date 2023	
Drawing author Robbert De Neve	Drawing version 1.0
Plot view Top view Front	

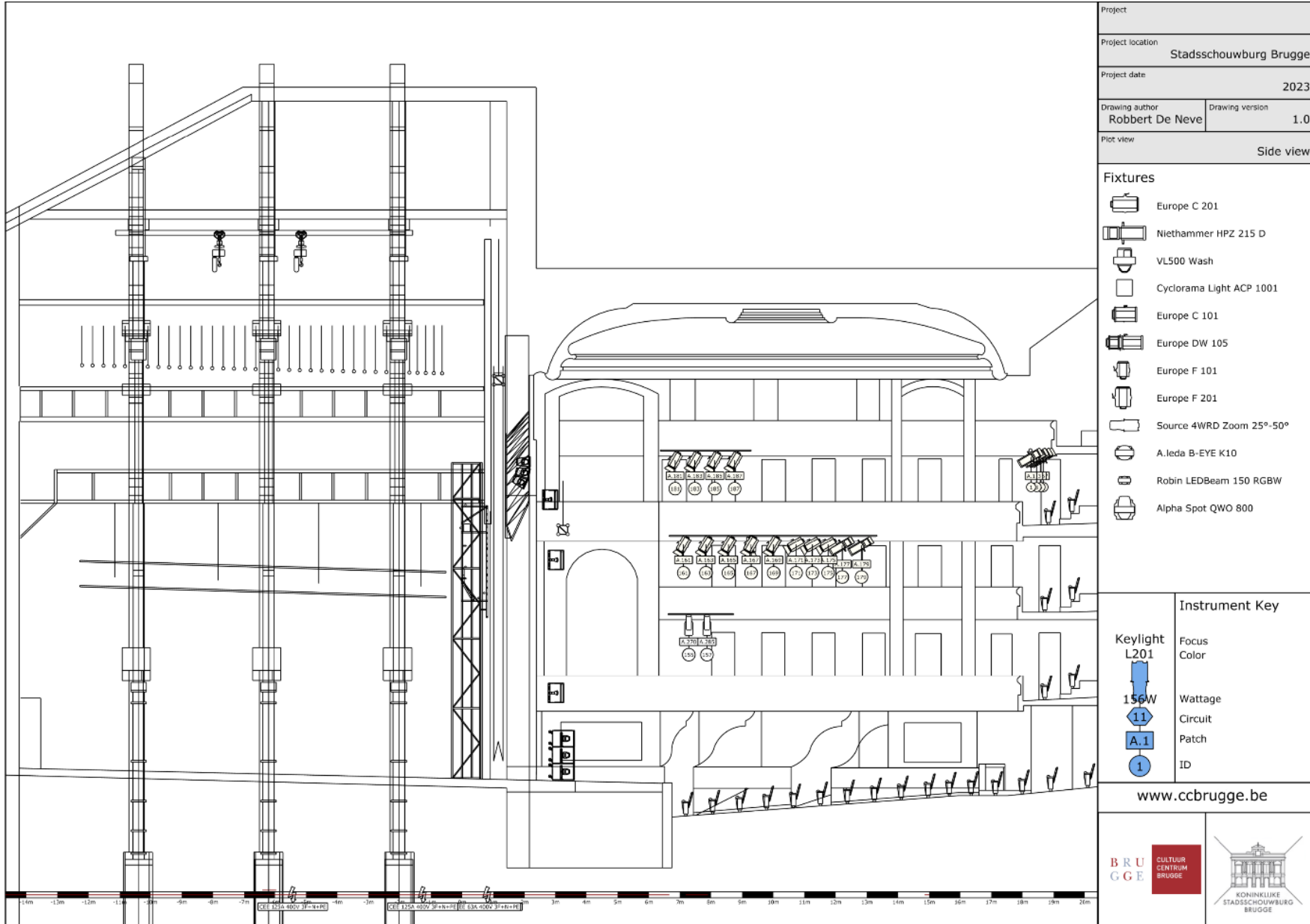
- Fixtures**
- Europe C 201
  - Niethammer HPZ 215 D
  - VL500 Wash
  - Cyclorama Light ACP 1001
  - Europe C 101
  - Europe DW 105
  - Europe F 101
  - Europe F 201
  - Source 4WRD Zoom 25°-50°
  - A.leda B-EYE K10
  - Robin LEDBeam 150 RGBW
  - Alpha Spot QWO 800

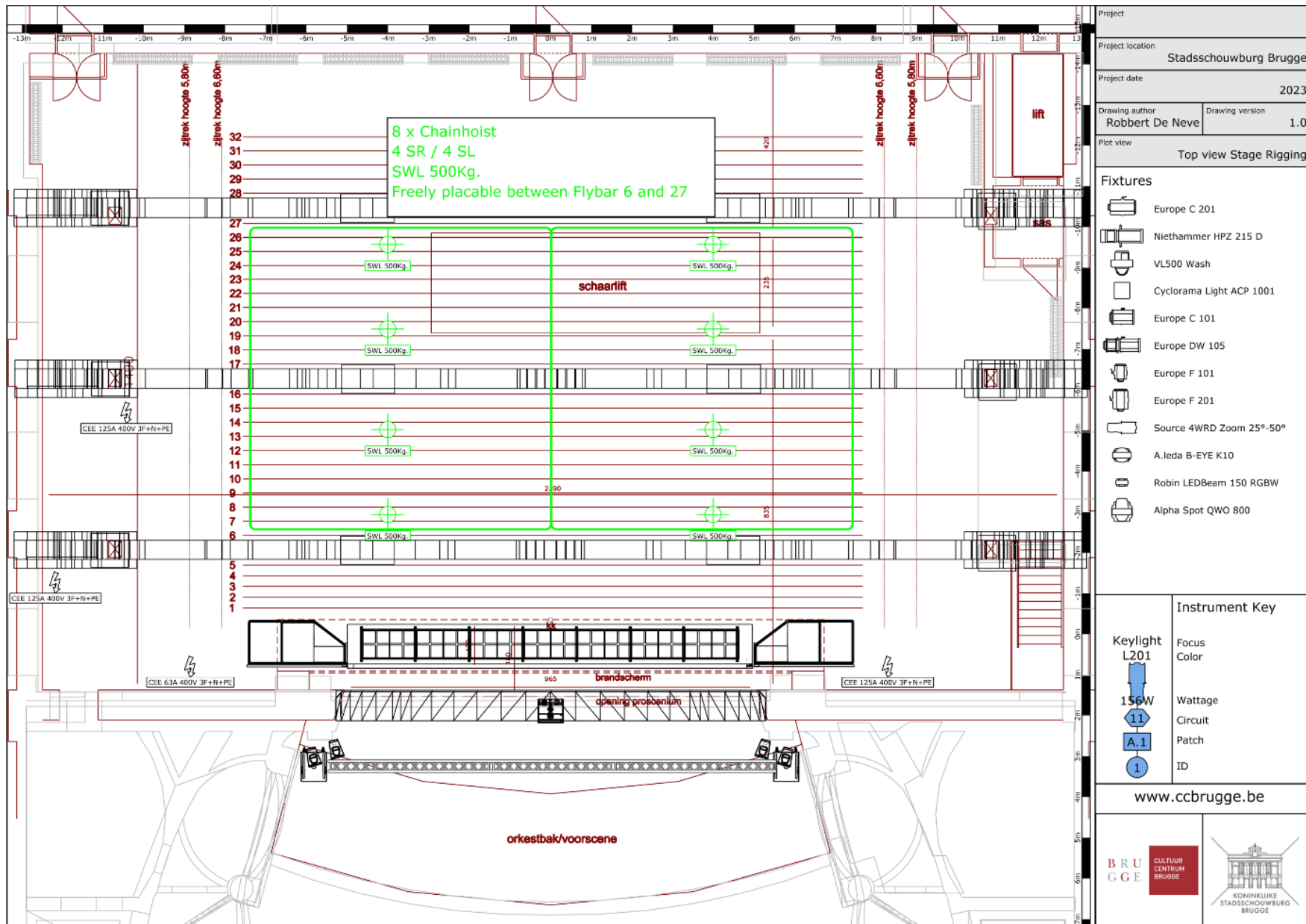
Instrument Key	
	Focus
	Wattage
	Circuit
	Patch
	ID

www.ccbbrugge.be

BRUGGE

KONINKLIJKE  
STADSSCHOUWBURG  
BRUGGE





Project	
Project location <b>Stadsschouwburg Brugge</b>	
Project date <b>2023</b>	
Drawing author <b>Robbert De Neve</b>	Drawing version <b>1.0</b>
Plot view <b>Top view Stage Rigging</b>	

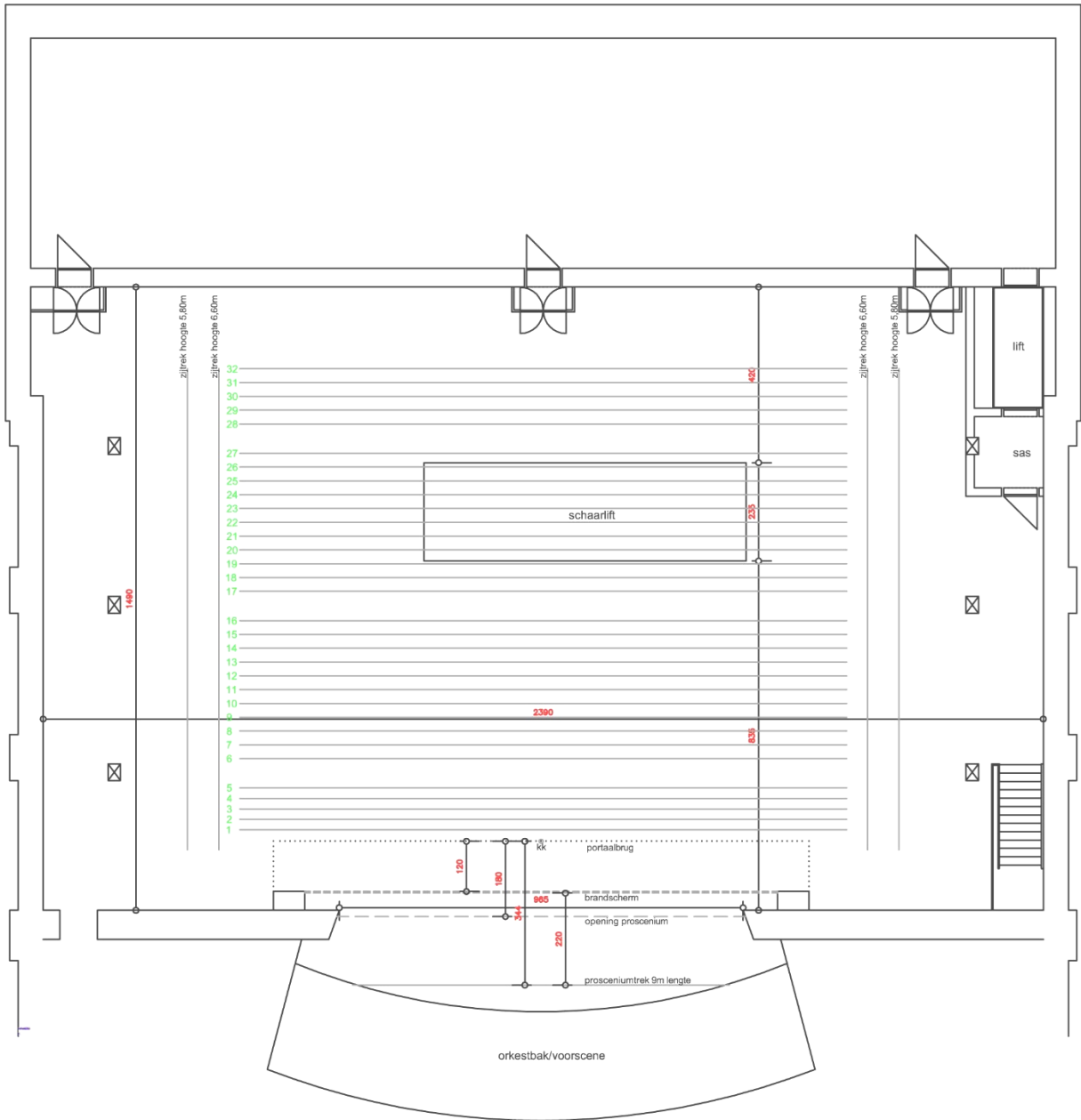
- Fixtures**
- Europe C 201
  - Niethammer HPZ 215 D
  - VL500 Wash
  - Cyclorama Light ACP 1001
  - Europe C 101
  - Europe DW 105
  - Europe F 101
  - Europe F 201
  - Source 4WRD Zoom 25°-50°
  - A.leda B-EYE K10
  - Robin LEDBeam 150 RGBW
  - Alpha Spot QWO 800

Instrument Key	
	Focus
	Color
	Wattage
	Circuit
	Patch
	ID

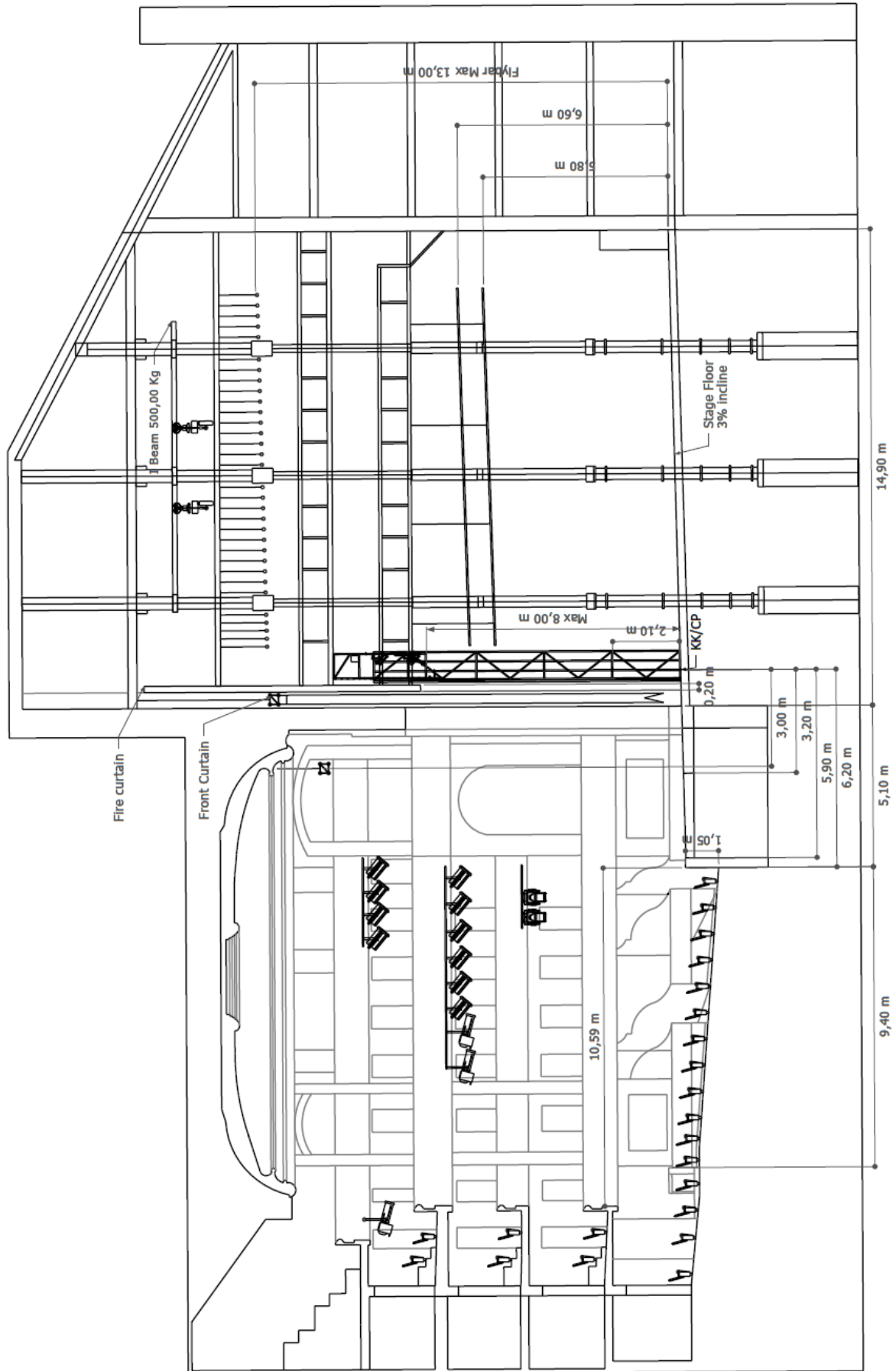
[www.ccbbrugge.be](http://www.ccbbrugge.be)

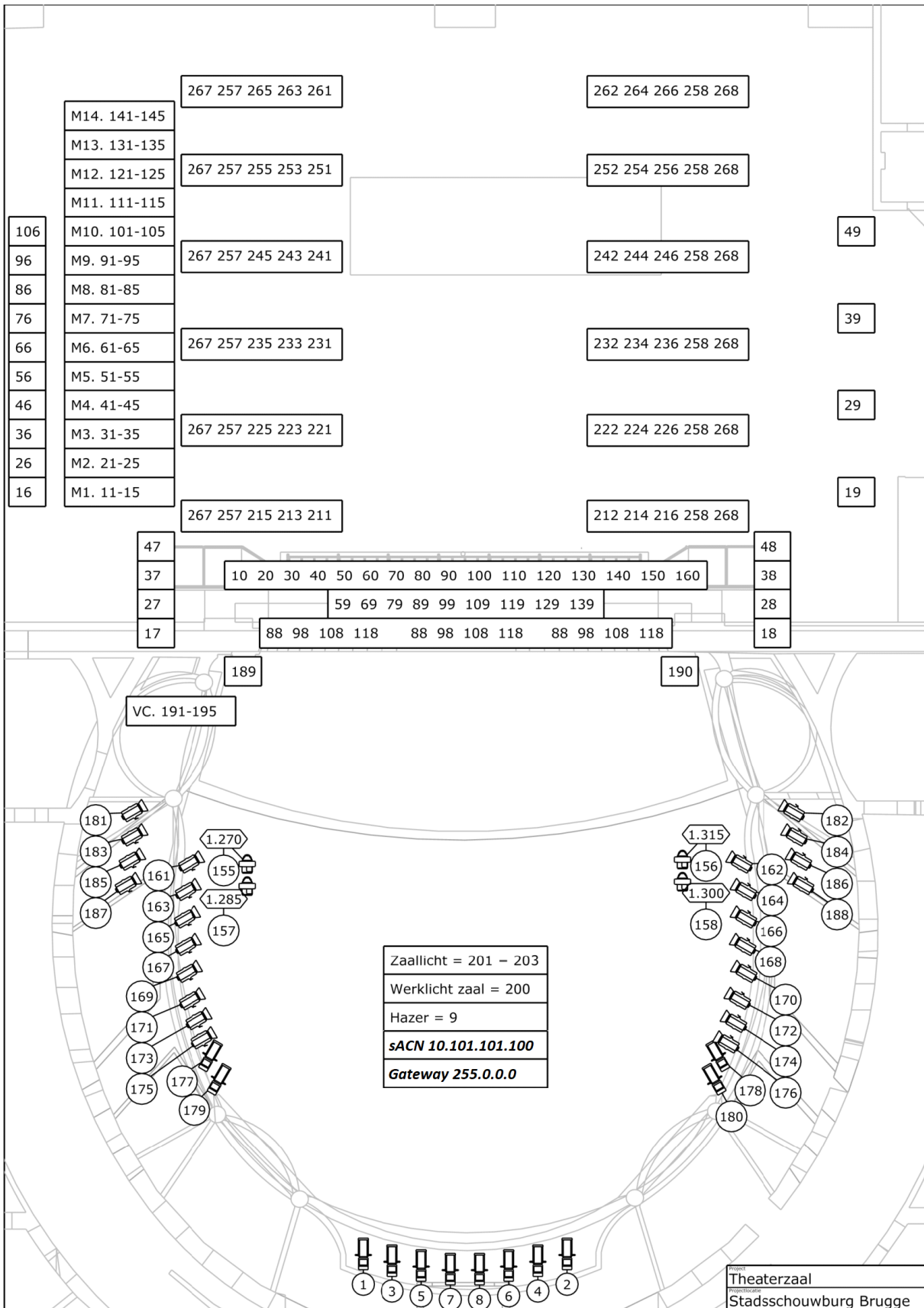
BRUGGE

KONINKLIJKE  
STADSSCHOUWBURG  
BRUGGE



scène stadsschouwburg brugge





## Flybars Royal City Theater Bruges

Date:		Performance:			Flybar		14,5	max	
							m	300Kg	13m
				MARKS					
Flybar	Mtr. C.P.	Weight	Description	High	Low	M1	M2	M3	M4
motor truss	-3								
portal bridge	0								
1	0,275								
2	0,525								
3	0,775								
4	1,025								
5	1,275								
<b>GIRDER 1</b>									
6	1,975								
7	2,305								
8	2,635								
9	2,965								
10	3,295								
11	3,625								
12	3,955								
13	4,285								
14	4,615								
15	4,945								
16	5,275								
<b>GIRDER 2</b>									
17	5,975								
18	6,305								
19	6,635								
20	6,965								
21	7,295								
22	7,625								
23	7,955								
24	8,285								
25	8,615								
26	8,945								
27	9,275								
<b>GIRDER 3</b>									
28	9,975								
29	10,305								
30	10,635								
31	10,965								
32	11,295								
Side Flybar SR					Max Height	5,3 m			
Side Flybar SR					Max Height	6,6 m			
Side Flybar SL					Max Height	6,6 m			
Side Flybar SL					Max Height	5,3 m			
8x Motor SWL 500 Kg Freely placeable between girder 1 and girder 3 limited to 4 spaced on 1 line									

Part 10

## Royal City Theater – Pictures